

2026 Fiesta Fling

Rules and Course Layout

General Rules

Out of Bounds (OB)

- The walking path and beyond is OB.
- Additional OB is marked with white spray paint and white flags. The line itself is OB.
- If your disc lands OB (no part of the disc is touching in bounds), take your lie where the disc went out of bounds and add a one stroke penalty to your score.

Mandatories (Mandos)

- Mandos are marked with pink ribbons.
- Drop zones for missed mandos are marked by pink spray paint and pink flags.
- If your disc passes on the wrong side of a mando tree, proceed to the marked drop zone in the fairway near the mando and add a one stroke penalty to your score.

OB and drop zone lines will be painted 2 days before the first day of the tournament.

Other

- People on the walking path have the right-of-way. When playing a hole near the path, wait until the path is clear/safe before throwing. Use a spotter if necessary.
- If a disc lands on a different hole than the one being played, the higher hole has the right-of-way. Example: If a drive from Hole 12 lands on the fairway of Hole 18, the player on Hole 12 needs to wait for Hole 18 to clear before proceeding to their drive.
- After finishing your round during the shotgun start, please proceed to the nearest walking path at the perimeter of the course and take the walking path back to the parking lot. Do not walk through the course as other groups may still be playing.

Doubles Formats

Round 1 (Friday – Shotgun Start)

Best Disc

Both teammates throw from the tee pad. As a team they decide which shot is better, and they both throw their next shots from that same lie. The hole is completed when one teammate gets the disc in the basket.

Round 2 (Saturday – Tee Times)

Alternate Shot (Alternating Tee)

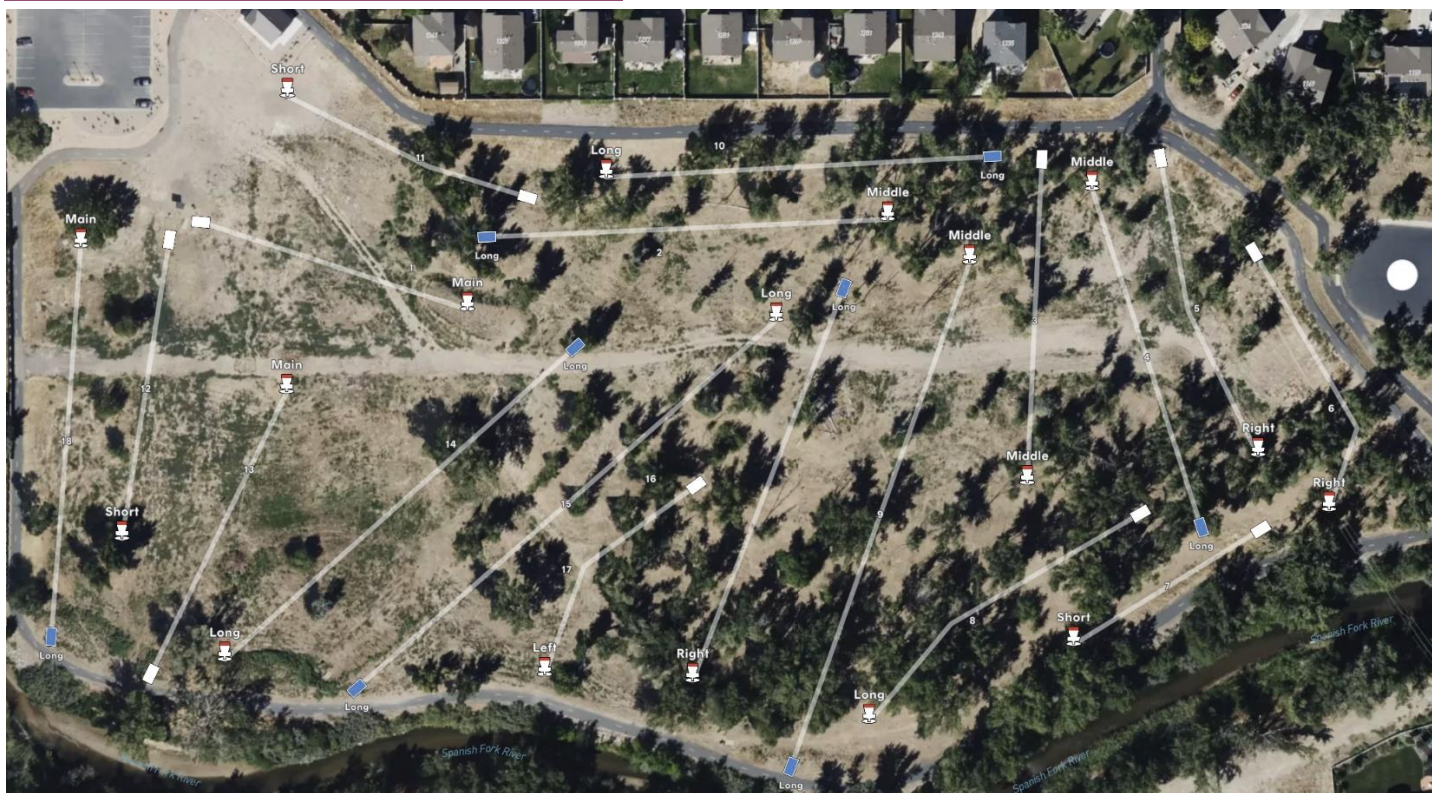
Teammates take turns throwing from where the other teammate's disc landed until one teammate gets the disc in the basket. It is predetermined which teammate will take which tee shot, no matter who finishes the previous hole. For example, teammate 1 will tee on all odd holes and teammate 2 on all even holes.

The following pages contain the course layout for each division.

Upper Division Layout

PAR 58 | 5,788'

Fiesta Fling - Upper Division - UDisc Caddy Book



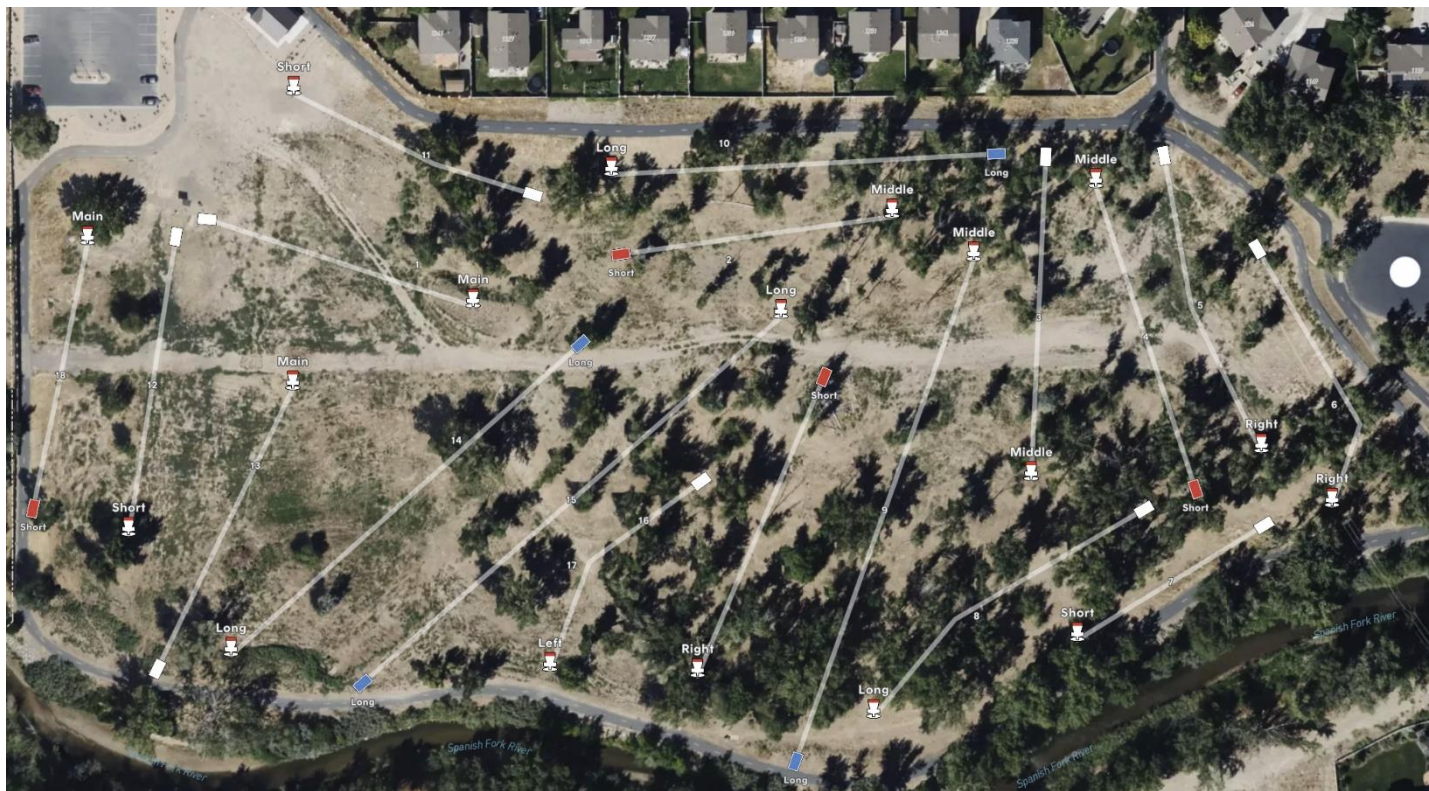
HOLE NUMBER	PAR	DISTANCE (feet)	TEE PAD	PIN POSITION	Notes
1	3	253	Main	Main	
2	3	362	Long*	Middle	OB left
3	3	290	Main	Middle	
4	3	319	Long*	Middle	
5	3	283	Main	Right	Mando right @ 100'
6	3	261	Main	Right	Double mando @ 170'
7	3	198	Main	Short	
8	3	312	Main	Long	
9	4	481	Long	Middle	
10	4	348	Long	Long	OB left and long. Two left mandos.
11	3	235	Main	Short	Left mando @ 80'. The curbing long/right is OB.
12	3	273	Main	Short	OB right
13	3	283	Main	Main	Hazard island. If your disc does not come to rest inside the island (log border), play it where it lies with a stroke penalty.
14	4	425	Long	Long	Double mando @ 130'
15	4	504	Long	Long	Double mando @ 350'
16	3	379	Long*	Right	
17	3	229	Main	Left	
18	3	353	Long*	Main	OB right and long

*Different than the Lower and Mixed divisions.

Lower and Mixed Divisions Layout

PAR 58 | 5,449'

Fiesta Fling - Lower and Mixed Divisions - UDisc Caddy Book



HOLE NUMBER	PAR	DISTANCE (feet)	TEE PAD	PIN POSITION	Notes
1	3	253	Main	Main	
2	3	248	Short*	Middle	OB left. Double mando through the two trees directly in front of tee pad.
3	3	290	Main	Middle	
4	3	287	Short*	Middle	
5	3	283	Main	Right	Mando right @ 100'
6	3	261	Main	Right	Double mando @ 170'
7	3	198	Main	Short	
8	3	312	Main	Long	
9	4	481	Long	Middle	
10	4	348	Long	Long	OB left and long. Two left mandos.
11	3	235	Main	Short	Left mando @ 80'. The curbing long/right is OB.
12	3	273	Main	Short	OB right
13	3	283	Main	Main	Hazard island. If your disc does not come to rest inside the island (log border), play it where it lies with a stroke penalty.
14	4	425	Long	Long	Double mando @ 130'
15	4	504	Long	Long	Double mando @ 350'
16	3	294	Short*	Right	
17	3	229	Main	Left	
18	3	245	Short*	Main	OB right and long

*Different than the Upper division.